

The Modernization of Korea's Land Administration for Global-level E-governance

Kim, Youngpyo
CEO of LX





Established in

1977



Number of Employees

4,378



Countries of Overseas Projects

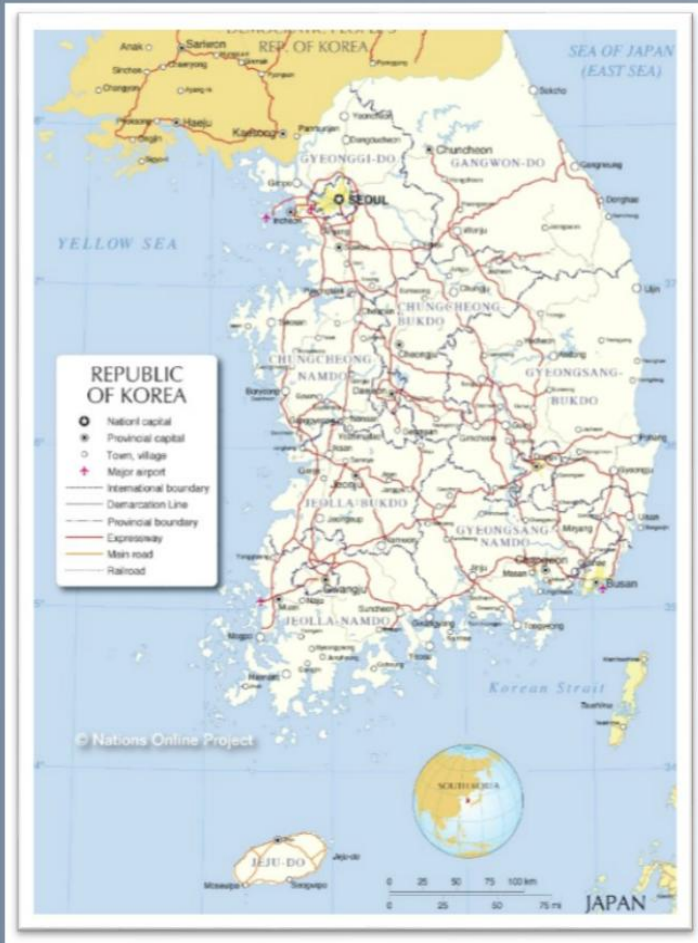
20

**IX Simposio
Iberoamericano
de Catastro**



Alcaldía de Medellín
Cuenta con vos

South Korea at a glance



- Area: 99,720 km²
- Land use
 - Forest(65%), Agricultural(21%)
 - Residential(3%), Others(11%)
- Population: 51 million
- Population Density : 513 / km²
- Parcels: 37 million

Access to public Information

52.5 million
transactions via the internet
in 2014

Certificate of Residence
Certificate of Family
Relations

15.5 million

Land Register, Land Book &
Land Use

19.9 million

The Korean War (1950 - 1953)



- Civilians killed: 0.8 million people
- Separated Families: 10 million people

* Population of Korea (south & north) was 30 millions in 1950.

- More than 80% of the infrastructure and facilities in Korea were totally destroyed.
- GNI was only \$67 in 1953.

Economic development from the ashes of war

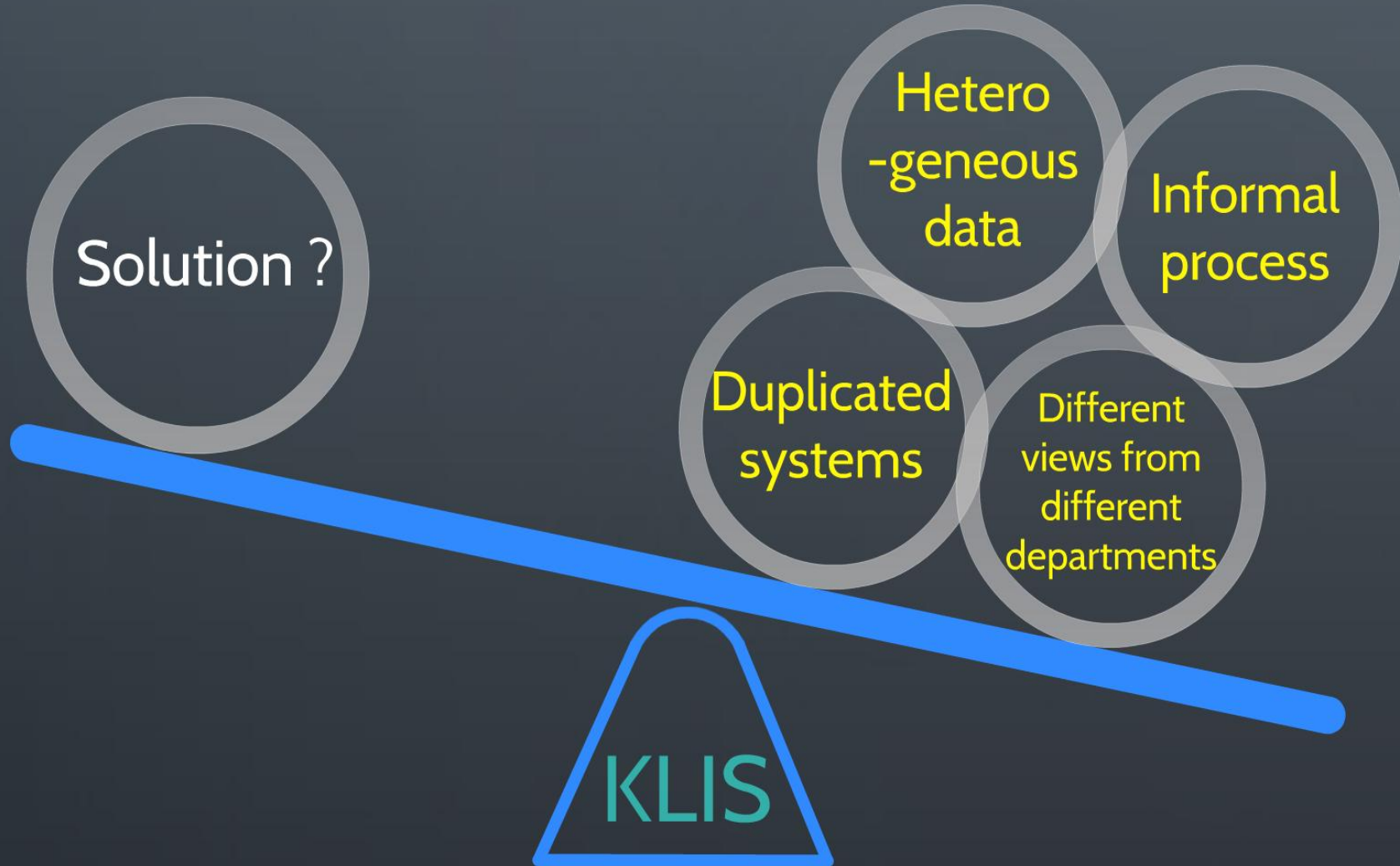
GDP(\$): 1.44 trillion in 2015
Ranked 11th in the world



**IX Simposio
Iberoamericano
de Catastro**



Problems in Land Sector



History of KLIS and e-Government in Korea



History of Korean e-Government



NGIS (National Geographic Information Structure) Project





1996
-2002

KLIS
Phase I

2005
-current

KLIS
Phase II



1975

Card-shape
land-book

1978-1984

Digitization of
land-book

1994

Digitization
of map

1996



Inception (-1996)

2003

Launch

2005



Diffusion(-2007)

2010



Maturity(-current)

1978

1996

2000

2003

2008

• Expansion of
integration
of e-Government

- General civil services
- Immigration control services
- On-line procurement services
- Home tax services
- e-customs clearance services
- Land information services

KLIS

**IX Simposio
Iberoamericano
de Catastro**



Maturity of e-Government

2008

current

Expansion of integration of e-Government



General civil services



Immigration control services



On-line procurement services



Home tax services



e-customs clearance services

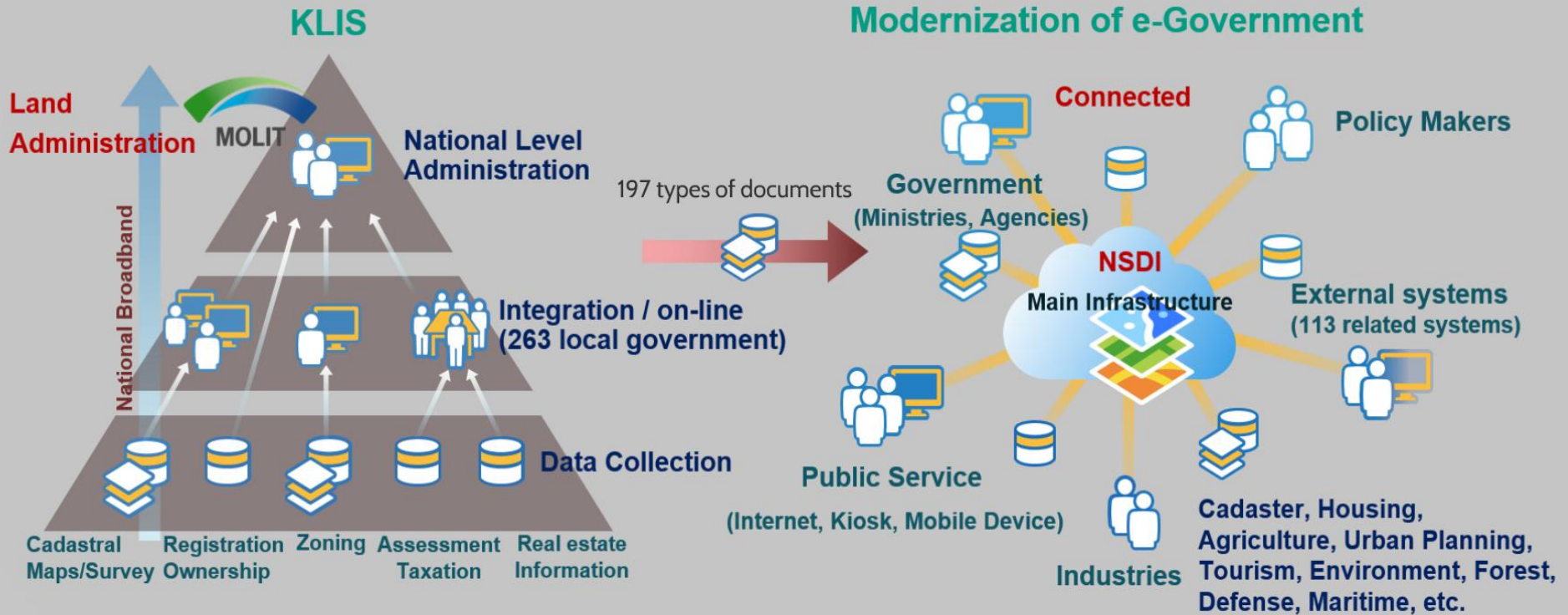


Land information services

⋮

KLIS

KLIS Service



Advanced Service

KIOSK Service



Community Center

Bank

Market

Mobile Land Information Service by LX

Land Info. Service

Area Search

Navigation

Evacuation Route



Reduction of administration-cost and time

Service	Before	After
Issue an official copy of land register	20 minutes	Instant
Issue an official copy of land use plan	20 minutes	Instant
Access to publicly noticed individual land price	10 minutes	Instant
Permit of land transaction	10 days	1 day
Formal objection to appraised value of land	10 days	3 days
Register real estate agency	5 days	1 days



-
-
-



Benefits



**IX Simposio
Iberoamericano
de Catastro**



Access to land information

unit : million

Service	Total	Transaction				
		2010	2011	2012	2013	2014
Copies of land register (ownership)	55.2	11.3	11.6	10.6	10.8	10.9
Copies of land-book (cadastre)	46.2	7.9	8.3	9.1	12.0	8.9
Confirmation Land Use Plan	1.1	0.2	0.2	0.2	0.3	0.2
Grand total	102.5	19.4	20.1	19.9	23.1	20.0
Cost saving (\$3 for each transaction) unit : million \$	307.6	58.3	60.3	60.0	69.2	59.8

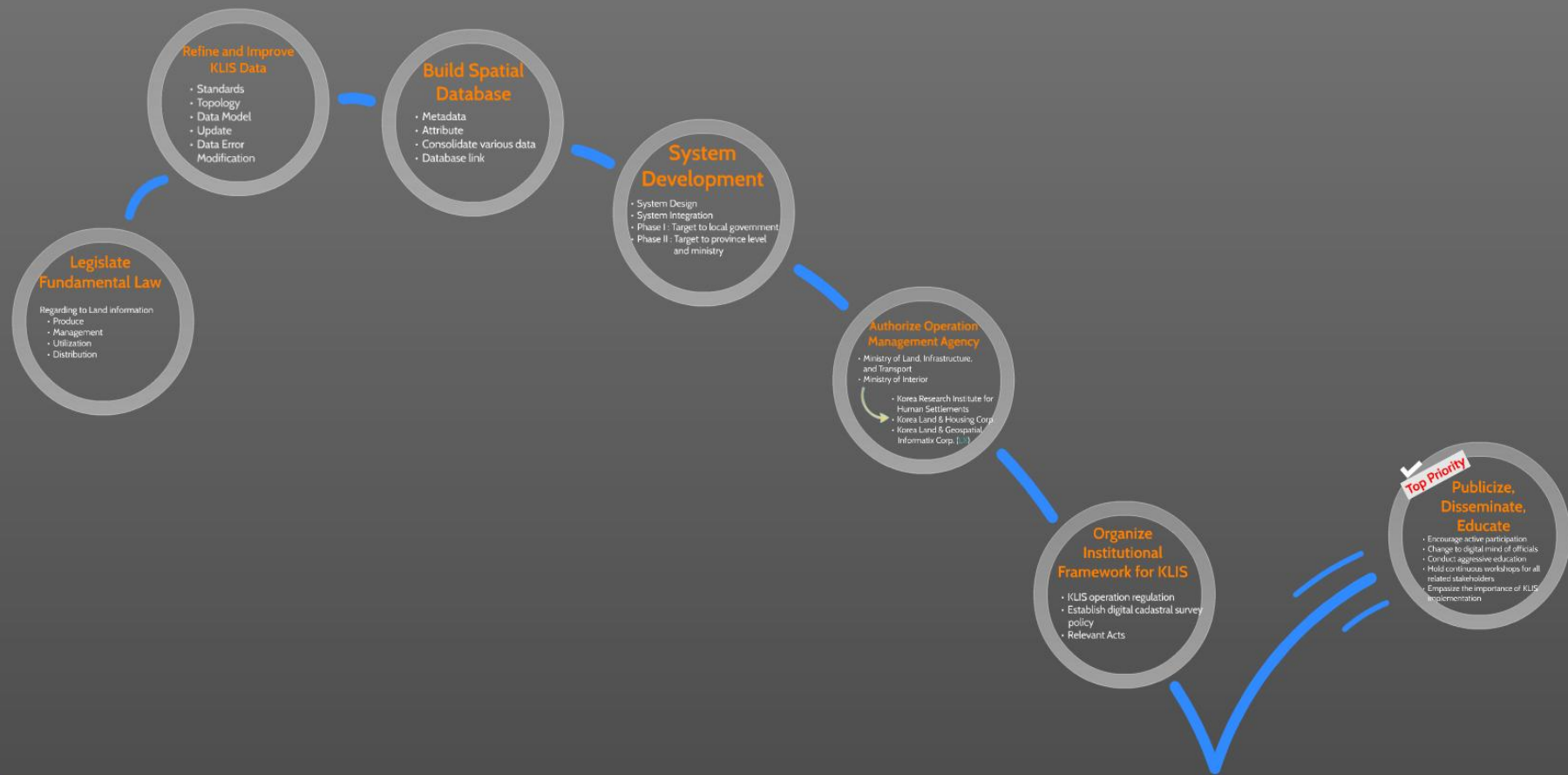
20 million

transactions per year



\$ 60 million

Cost Saving per year



How to achieve goals?

Legislate Fundamental Law

Regarding to Land information

- Produce
- Management
- Utilization
- Distribution

Refine and Improve KLIS Data

- Standards
- Topology
- Data Model
- Update
- Data Error
Modification

Build Spatial Database

- Metadata
- Attribute
- Consolidate various data
- Database link

System Development

- System Design
- System Integration
- Phase I : Target to local government
- Phase II : Target to province level
and ministry

Authorize Operation Management Agency

- Ministry of Land, Infrastructure, and Transport
 - Ministry of Interior
- 
- Korea Research Institute for Human Settlements
 - Korea Land & Housing Corp.
 - Korea Land & Geospatial Informatix Corp. (LX)

Organize Institutional Framework for KLIS

- KLIS operation regulation
- Establish digital cadastral survey policy
- Relevant Acts

Top Priority

Publicize, Disseminate, Educate

- Encourage active participation
- Change to digital mind of officials
- Conduct aggressive education
- Hold continuous workshops for all related stakeholders
- Emphasize the importance of KLIS implementation



¡GRACIAS!